



---

**SWIFT TEST**

---

FIBER OPTIC TEST KIT

ALL INCLUSIVE



## FIBER OPTIC TEST EQUIPMENT KITS

The Swift Test product line from UCL Swift consists of six Fiber Optic Test Equipment Kits, designed to accommodate both your budget and network testing requirements for data center, enterprise and LAN applications.

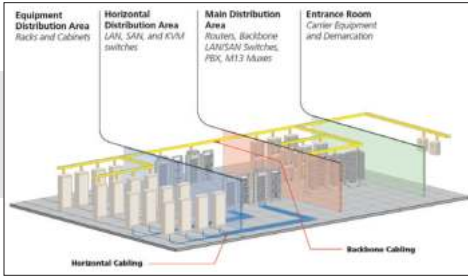
Our handheld test kits can provide expedited testing for your physical layer connectivity infrastructures with accuracy and ease. The Swift Test product line is available in 6 different configurations including Basic kits offering multimode or singlemode configurations to Advanced and Premium kits that provide both configurations and additional visual inspection equipment.

Also included, is our documentation package "SWIFT-TRACK" that stores up to 5,000 readings and can be downloaded to your PC for documentation reports generated in various formats. A library of various templates are available online and custom templates are easily configured.



## KIT INCLUDES

PART NUMBER	QTY	PRODUCT DESCRIPTION	TEK-1 PREMIUM MM & SM	TEK-2 ADVANCED MM & SM	TEK-3 BASIC MM	TEK-4 BASIC SM	TEK-5 ADVANCED MM	TEK-6 ADVANCED SM
<u>1</u> OPM1	1	Optical power meter SC adapter multimode or singlemode testing (comes with USB to Mini "B" data port cable) batteries included	●	●	●	●	●	●
<u>2</u> LSMM	1	LED light source, multimode, dual 850/1300nm, SC adapter (interchangeable), batteries included	●	●	●		●	
<u>3</u> LSSM	1	Laser light source, singlemode, dual 1310/1550nm, SC adapter (interchangeable), batteries included	●	●		●		●
<u>4</u> CCT1	1	Carrying case for testers and accessories 17" X 12" X 4"	●	●	●	●	●	●
<u>5</u> FOCP	2	LC duplex and SC duplex couplers for testing	●	●	●	●	●	●
<u>6</u> RWB2	1	Recharger and 4 rechargeable CB2 batteries	●	●	●	●	●	●
<u>7</u> PSD1	1	DC power supply for light sources	●	●	●	●	●	●
<u>8</u> LSAL	1	LC light source adapter (interchangeable)	●	●	●	●	●	●
<u>9</u> OPAL	1	Power meter adapter LC	●	●	●	●	●	●
<u>10</u> LBTS	1	LC loopback for testing and calibration, singlemode blue, hard body, retractable door and lanyard	●	●		●		●
<u>11</u> LBTM	1	LC loopback for testing and calibration, multimode black, hard body, retractable door and lanyard	●	●	●		●	
<u>12</u> VFF1	1	1mW (5km) pen shape visual fault finder with standard 2.5mm universal adapter and protective case for carrying on belt	●				●	●
<u>13</u> VFA1	1	2.5mm to 1.25mm fiber optical adapter for visual fault finder	●				●	●
<u>14</u> HFM1	1	400X handheld fiber optic inspection microscope with 2.5mm & 1.25mm adapters for LC/SC/ST/FC/MU connectors and protective carrying case	●				●	●
<u>15</u> SSTI	1	"SWIFT TRACK" data testing documentation software (download from our website)	●	●	●	●	●	●
<u>16</u> Multi-Box (tool set) Blue	1	Accessory storage case (holds spare batteries, couplers, adapters and lens)	●	●	●	●	●	●
<u>17</u> BAA1	2	"AA" batteries	●				●	●
<u>18</u> BAAA	3	"AAA" batteries	●				●	●
<u>19</u> F201CCE01A1S3F	1	LC-LC/LC-SC 3 foot duplex jumper riser 2.0mm ZIP aqua OM4	●	●	●		●	
<u>20</u> F202CCC01Y1S3F	1	LC-LC/LC-SC 3 foot duplex jumper riser 2.0mm ZIP yellow OS2	●	●		●		●
<u>21</u> F10121E01A1S3f	1	Simplex SC/LC 3 foot simplex jumper riser 2.0mm aqua OM4	●	●	●		●	
<u>22</u> F10222C01Y1S3f	1	Simplex SC/LC 3 foot simplex jumper riser 2.0mm yellow OS2	●	●		●		●
<u>23</u> BPK-6	1 (6-pack)	CR2 batteries non-rechargeable (orange in color)	●	●	●	●	●	●



Infrastructure

ID	Date	Time	Reading
1A	01/01/00	00:13	0.13dB λ 850
1B	01/01/00	00:13	0.15dB λ 850
2A	01/01/00	00:13	0.05dB λ 850
2B	01/01/00	00:13	0.17dB λ 850
3A	01/01/00	00:14	0.07dB λ 850

Documentation



Testing

## 12 | VISUAL FAULT FINDER



### USED TO

- Identify and trace the location of fiber optic cables in patch panel ports
- Verify polarity of cables
- Check for defective fiber optic connectors or breaks and micro bends in fiber cables
- Output can be set to either continuous or pulse mode for ease of identification

### INCLUDES

- 1.5mm ferrule adaptor for LC, MU

## 14 | HANDHELD 400X INSPECTION MICROSCOPE



### USED TO

- Visually inspect the end face of fiber optic ferrules for dirt (contamination), scratches or cracks

### INCLUDES

- Two microscope fiber adapters: 2.5 ferrule for ST, SC and FC and 1.25 ferrule for LC and MU

**NOTE:** Remember to clean the fiber optic adapters, couplers and connectors before each use with a clean swab, wipe, cleansers or appropriate IBC cleaner like those found in our CK-01 & CK-02 cleaning kits.

## CK-01



- Bag, 9x8x3 zippered
- Swabs, package of 25
- AquaKleen cleaner, 2 fl oz bottle
- FiberKleen wipes, pk of 50 wipes
- Brush
- Screwdriver
- Tweezers
- Illuminated jeweler's loupe
- Instruction sheet
- Zipper pull
- Sharpie, medium point

## CK-02



- Bag, 9x8x3 zippered
- Swabs, package of 25
- AquaKleen cleaner, 2 fl oz bottle
- FiberKleen wipes, pk of 50 wipes
- IBC-SC
- IBC-LC
- Optipop-R
- Instruction sheet
- Zipper pull

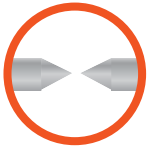
# KF4A

## Active Cladding Alignment

ALL-IN-ONE PRODUCT



ROTATING BLADE LIFE  
UP TO **75,000**



ELECTRODE LIFE  
UP TO **38,000**



LC Splice-On Connector

The Swift KF4A is a highly advanced and accurate active cladding alignment fusion splicer. It has been designed to perform the major 5 multifunctional features systematically: stripping, cleaning, cleaving, splicing and sleeving (All-In-One). The Swift KF4A is the best fit for fusion splicing and fusion splice-on connectors (SOC) of FTTx network applications. The KF4A eliminates fatal issues common with conventional mechanical connectors including low quality, weak durability and high maintenance costs. The Swift KF4A fusion splicer coupled with our fusion splice-on connectors provides customers the best ROI.

